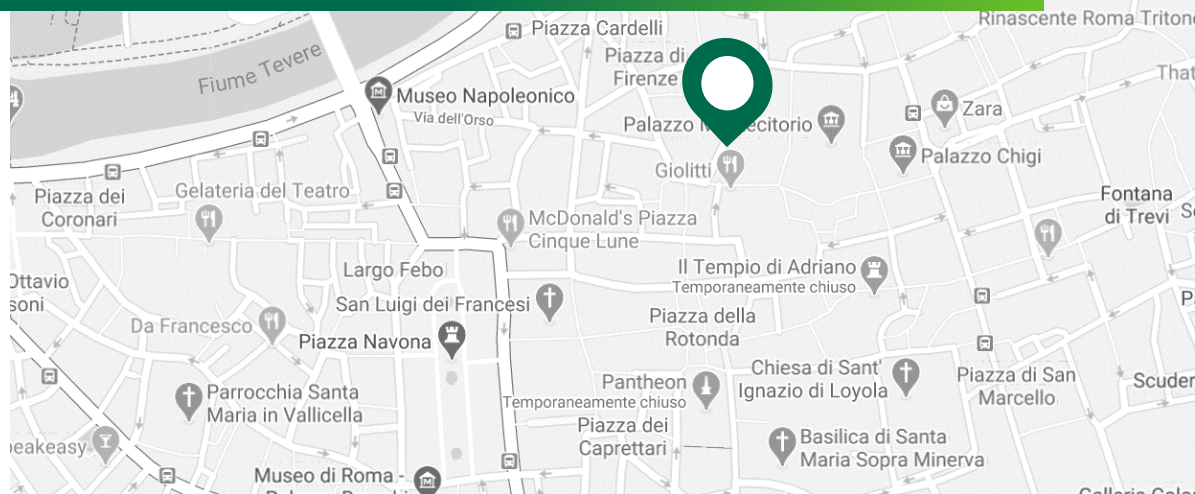


VENDITA

# ROMA

VIA CAMPO MARZIO 69



<b>CONDUTTORE</b>	Gruppo BPM
<b>STATUS</b>	Locato
<b>SUPERFICIE LORDA</b>	836 mq
<b>DURATA LOCAZIONE</b>	6+6
<b>INIZIO LOCAZIONE</b>	01/01/2021
<b>PRIMA SCADENZA</b>	01/01/2027
<b>BREAK OPTION</b>	Rolling a partire da 31/12/2023 con 12 mesi di preavviso
<b>IMU</b>	16.486 €/anno
<b>TASI</b>	996 €/anno
<b>CANONE ATTUALE</b>	397.451 €
<b>PROPRIETA'</b>	Generali Real Estate SGR Fondo Eracle



## CONTATTI

### Mario Previsdomini

Senior Director  
+39 06 452 385 68  
+39 346 00 23 146  
mario.previsdomini@cbre.com

### Roberto Ventre

Director A&T High Street & Retail IP  
T +39 06 452 385 51  
M +39 346 072 63 36  
roberto.ventre@cbre.com

**CBRE**

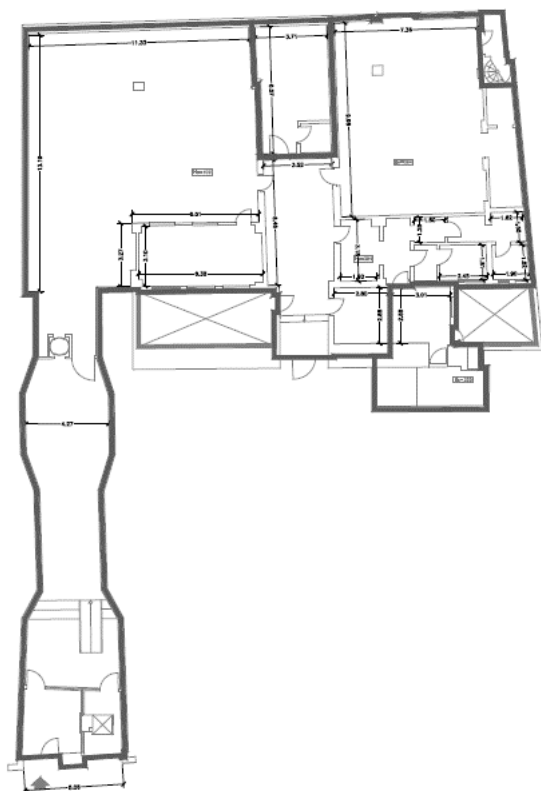


**BNP PARIBAS  
REAL ESTATE**

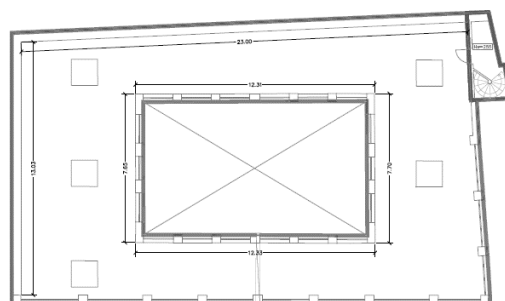
VENDITA

# Roma – Via Campo Marzio 69

PIANO TERRA



PIANO PRIMO



PIANO	DESTINAZIONE	SUPERFICIE LORDA (sqm)
Terra	Agenzia Bancaria + Caveau	499
Terra	Cortile	32
Terra	Locali tecnici	28
Primo	Terrazzi	277
<b>TOTALE</b>		<b>836</b>

© 2020 CBRE Spa. The information contained in this document has been obtained from sources believed reliable. While CBRE Spa does not doubt its accuracy, CBRE Spa has not verified it and makes no guarantee, warranty or representation about it. It is your responsibility to independently confirm its accuracy and completeness. Any projections, opinions, assumptions or estimates used are for example only and do not represent the current or future performance of the property. The value of this transaction to you depends on tax and other factors which should be evaluated by your tax, financial and legal advisors. You and your advisors should conduct a careful, independent investigation of the property to determine to your satisfaction the suitability of the property for your needs.

Photos herein are the property of their respective owners and use of these images without the express written consent of the owner is prohibited.

**CBRE**



**BNP PARIBAS  
REAL ESTATE**